



Z80-H528.08 S5VW3

Pneumatic taper change

Item no. **10405047-08**

HF-Spindle for high-speed milling, -grinding, -drilling, -engraving

Bearings

| | |
|---------------------------|------------------|
| Hybrid ball bearing (pcs) | 4 |
| Lifetime lubricated | maintenance free |

Motor

| | |
|--|---|
| Motor technology | 3-phase asynchronous drive (no brushes or sensors) |
| Frequency | 933 Hz |
| Motor poles (pairs) | 2 |
| Rated rotation speed | 28.000 rpm |
| Acceleration/braking value Per second | 10 000 rpm (other values by consultation) |

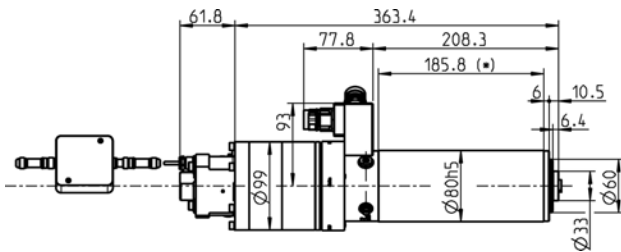
Power values

Liquid cooled

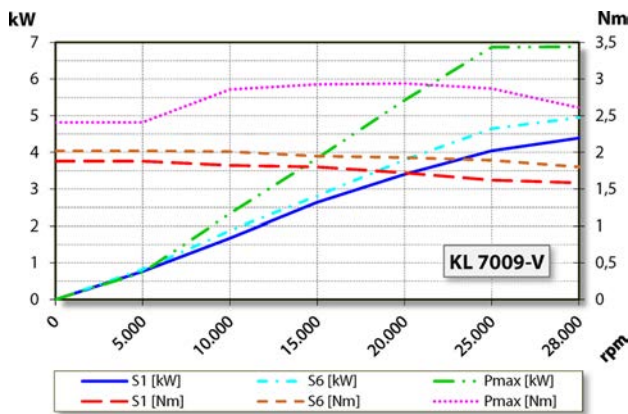
| | Pmax./5s | S6-60% | S1-100% | |
|-------------|----------|--------|---------|------|
| Rated power | 6,9 | 4,9 | 4,4 | [kW] |
| Torque | 2,94 | 2,02 | 1,88 | [Nm] |
| Voltage | 351 | 354 | 366 | [V] |
| Current | 16 | 11 | 10 | [A] |

Z80-H528.08 S5VW3

Pneumatic taper change
Item no. **10405047-08**



Dimensions



Performance Diagram

Liquid cooled

Measurement of power is funded by in-house testing.

Characteristics

| | |
|--|---|
| Speed sensor | Vector control |
| Toothed wheel | Teeth = 110 Module = 0,3 |
| Motor protection | Pt1000 |
| Housing | Stainless steel |
| Housing diameter | 80 mm |
| Cooling | Liquid cooled |
| Ambient temperature | + 10°C ... + 45°C |
| Sealing air | |
| Protection category (sealing air turned on) | IP54 |
| Taper cleaning | |
| Tool change | Pneumatic taper change |
| Tool Holder | HSK-E 32 |
| Tool change monitoring | inductive |
| 3 positions | clamped, unclamped, ejected |
| Clamping range up to | 13 mm |
| Clockwise and anticlockwise | |
| Coupler plug | 9-pin (SpeedTEC) (motor phases) 17-pin (sensors) |
| Weight | ~ 12 kg |
| Inner taper run out | < 1 μ |
| Axial run-out | < 1 μ |